

# WEXFORD FESTIVAL OPERA



# 75 YEARS OF EXTRAORDINARY



WEXFORD  
FESTIVAL  
OPERA

EVENTS GUIDE  
15–31 OCTOBER 2026



THE  
BEST  
OF

WEXFORD  
FESTIVAL  
OPERA 75

Don Quichotte, 2019  
Photo: Clive Bardal/ArenaPal

## FUNDERS AND SPONSORS

### PRINCIPAL FUNDER



### GRANT FUNDERS



### CORPORATE LEADERS



### CORPORATE SPONSORS



### COMMUNITY AND EDUCATION PARTNERS



### MEDIA PARTNERS



### ACCOMMODATION AND HOSPITALITY PARTNERS



# Leading the development of the arts in Ireland.



Ahmed Karim Tamu in 'Mespil in the Dark' by Pan Pan | Photo: Ros Kavanagh



'I Set a Bait for the Unknown' by Cecilia Danell | Photo: Gillian Buckle



Will Flanagan in 'The Presence of Absence' by Alchemy Art | Photo: Marcin Lewandawski



Vanessa, 2016  
Photo: Clive Barda/ArenaPal

# CONTENTS



<b>WELCOME</b>	<b>8</b>
<b>OPERAS</b>	<b>16</b>
<b>CONCERTS   RECITALS   TALKS   EVENTS</b>	<b>30</b>
<b>WEXFORD FACTORY</b>	<b>39</b>
<b>SUPPORTING THE FESTIVAL</b>	<b>40</b>
<b>WFO NEWS</b>	<b>52</b>
<b>BOOKING</b>	<b>56</b>
<b>PLAN YOUR VISIT</b>	<b>62</b>
<b>FESTIVAL CALENDAR</b>	<b>66</b>

# WELCOME



**ROSETTA CUCCHI**  
ARTISTIC DIRECTOR

Ciao dear Friends,

Seventy-five years. What an extraordinary, improbable and beautiful journey. When this Festival was born in 1951, it was an act of courage and imagination on the edge of Europe. It was a dream shared by a community and carried forward by artists, visionaries, volunteers, audiences, and – above all – by Friends like you. Today, as we celebrate this remarkable milestone, we do not simply look back with pride; we look forward with the same restless curiosity that has always defined us.

Wexford has never been about the obvious path. It has been about rediscovery and revelation. It has been about opening forgotten scores and finding within them beating hearts. It has been about young artists challenging themselves and seasoned performers finding new depths. It has been about that electric silence before the first note, when we hold our breath together in the dark.

This year's programme not only reflects on our past but also looks forward to the next 75 years. Each of the three mainstage operas has graced the Festival's history, and this year's theme – 'The Best of: one for the head, one for the heart, and one for fun' – is deeply embedded in our DNA. While these operas are rediscoveries, they also mirror our contemporary world: a place where differences sometimes divide us, yet art reminds us that empathy can unite us.

For the first time in our history, we gave you and fellow Wexford lovers the chance to vote for an opera you wished to see performed this year. Thanks to you – and friends from over 30 countries – this October Rossini's sparkling farce, *L'equivoco stravagante*, (*The Extravagant Misunderstanding*) will have a triumphant return to Wexford's stage.

I want to thank you from the bottom of my heart for your continued generosity, your loyalty, and for believing in our artistic ambition. Thank you for helping us reach this incredible milestone and for supporting our vision to nurture emerging talent.

Until we meet again for our grand anniversary celebration, please spread the word that Wexford is the place to be this October! I will be at the theatre door, eagerly looking forward to meeting you there.

Thank you for walking this path with us. Thank you for believing in the rare, the rediscovered, the extraordinary.

The next chapter begins now – and it begins with you.

As we say in Italian: *Grazie di cuore*.

Yours,  
**Rosetta**



**SUZANNE NANCE**  
EXECUTIVE DIRECTOR

Dear Friends,

For seventy five years, Wexford, Ireland has given the world something remarkable.

Wexford Festival Opera, on the banks of the River Slaney in the Sunny Southeast, continues to welcome audiences from across the globe with warmth and courage. In a country where storytelling and song are woven deeply into cultural life, this Festival has become a beacon of discovery.

Long before they were international stars, Mirella Freni, Ann Murray, Juan Diego Flórez and Joseph Calleja sang on the Wexford stage. Time and again, Wexford has recognised talent before the wider world knew them. That commitment to artistic excellence and fearless exploration has made Wexford a festival that has earned a place on the international stage.

What moves me most, as I begin my tenure as Executive Director, is the spirit of welcome that defines this special place. The people of Wexford, the wider Irish community, and devoted Friends like you, have created not only a renowned festival, but a home where artists and audiences deeply enjoy the experience of celebrating great art together.

As this 75th anniversary is celebrated, important steps are being taken to secure the Festival's future, including the establishment of an Endowment Fund and continued investment in mentoring the next generation, both on stage and behind the scenes. Many Friends are marking this milestone by deepening their support, and if you are considering a special gift in this anniversary year, please know how profoundly it will shape the next chapter.

For seventy-five years, this Festival has been sustained by those who believed in it, by Friends like you. It is a privilege to steward this extraordinary Festival into its next era and to help carry its spirit of discovery forward with you.

With gratitude,  
**Suzanne**

## ROOTED IN WEXFORD. RENOWNED BY THE WORLD. 75 YEARS OF COURAGE, CURIOSITY, AND CONVICTION



**PAUL CLEARY**  
CHAIRMAN

Dear Friends,

It is with great pleasure and excitement that we share with you the detailed programme for the 75th Wexford Festival Opera.

Seventy-five years is a formidable span in the life of any cultural institution, but for an opera festival founded on curiosity, courage, and conviction rather than grand resources, it is nothing short of miraculous. Wexford Festival Opera has never been about playing safe. From the earliest days, we have asked audiences to listen with open ears, to trust unfamiliar names, and to believe that neglected and unfamiliar music, given care, scholarship, and passion, can speak with startling immediacy. That philosophy has carried the Festival from its modest beginnings in 1951 to its current status as one of the most unique and respected opera festivals in the world.

When the curtain rose on *The Rose of Castile* in November 1951, few in the audience could have imagined that they were witnessing the birth of something truly special. Post-war Ireland was not an obvious place for an international operatic enterprise, yet the Wexford Festival – as it was known then – has always demonstrated an ambition that far exceeded its modest circumstances.

From the outset, the founder Dr Tom Walsh imagined something audacious. Limited resources encouraged ingenuity. Dr Tom recalled that 'programming in the early days entailed giving the public not quite what it wanted but what it might like. This meant *la gazza Ladra* instead of *Il barbiere di Siviglia*, *I due Foscari* instead of *Il trovatore*, *Mireille* instead of *Faust*, and the seldom performed *Martha*'.

This curatorial bravery has distinguished Wexford from its peers. Across seventy-five years, the Festival's reputation was reinforced through the tenure of eight artistic directors, each of whom deepened the repertoire, restored forgotten operas to the stage and revived composers whose reputations had dimmed.

The careful casting of young, gifted singers remains a hallmark of the Wexford approach. For many singers a Wexford appearance proved a significant early milestone, and the Festival rightly gained a reputation as a place where emerging talent could be heard. Equally, Wexford has offered conductors, directors and designers a platform at the most formative stage of their careers. Yet the Festival's achievement cannot be measured by repertoire alone. What has always distinguished Wexford, is the atmosphere in which this work takes place. Central to the Festival's survival has been the extraordinary contribution of the volunteers. From the very first season, local men and women gave their time, skills, and energy in a spirit of shared ownership that remains unique in the operatic world. Generations of volunteers have passed down knowledge, practices, and pride, creating a living institutional memory that no archive could fully capture. For artists and visitors alike, the Festival's sense of intimacy, dedication, and goodwill, owes an immeasurable debt to this sustained voluntary effort.

The relationship between the Festival and the town of Wexford has also been crucial to its success. Each autumn, Wexford becomes a meeting place for artists and audiences from around the world. The warmth of the town's welcome has long been remarked upon by visitors. That sense of welcome is no accident. It is part of the Festival's identity and one of its greatest strengths. The relationship between the Festival and the town is reciprocal: each enriches the other, year after year. This close bond between place and festival has

given Wexford a character unlike any other operatic centre.

Like all long-standing institutions, the Festival has faced many challenges. Financial pressures, shifting cultural landscapes, and the unprecedented disruption of the Covid-19 pandemic, all tested its resilience. A key element of this resilience is the role played by you – the Friends of Wexford Festival Opera. Since 1951, our Friends have been far more than supporters in name. You have provided financial backing, practical assistance, encouragement and advocacy. Perhaps most importantly, you have remained a constant presence through periods of uncertainty, embodying the Festival's values and sustaining its ambitions. Your presence plays an essential role in the unique spirit of the Festival.

This 75th anniversary season offers not only an opportunity to look back on a legacy of rediscovery and artistic courage, but to experience it anew in the theatre, where it has always truly lived. In celebrating seventy-five unique years, the Festival honours the founders, artists, volunteers, Friends, and audiences who shaped its past, while reaffirming the spirit of curiosity that defines its future. To attend Wexford is to share in a living tradition, one that continues to surprise, challenge, and delight, just as it has since 1951.

I look forward to welcoming you all in October, to join in the celebration of 75 years of Wexford Festival Opera.

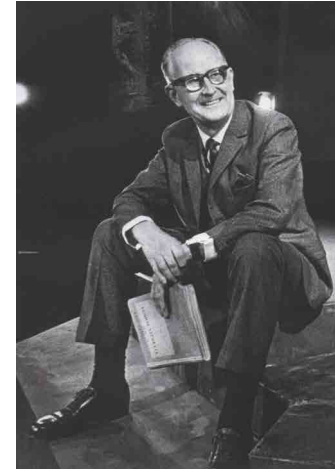
**Paul Cleary**, Chairman



IRELAND'S  
ANCIENT EAST®



# THE FOUNDERS CIRCLE



DR TOM WALSH

## HONOUR THE 75TH ANNIVERSARY AS A MEMBER OF THE FOUNDERS CIRCLE

In this landmark 75th anniversary year, a gift of €75,000+ offers a rare opportunity to honour Wexford Festival Opera's extraordinary past while helping to shape its future.

When Dr Tom Walsh founded the Festival in 1951, he did so with the bold conviction that great opera could flourish in Wexford, sustained by artistic ambition and a community united in belief. That founding spirit of discovery and courage continues to define the Festival today.

As a member of the Founders Circle, your profound generosity carries that original vision forward, enabling the Festival to realise its boldest artistic ambitions, attract exceptional artists, nurture emerging talent, and bring unforgettable productions to the stage.

You may choose to direct your gift toward an area that holds special meaning for you, including mainstage productions, leading artists, young artist development, the Orchestra or Chorus, or education and community programmes.

Founders Circle members form a small and visionary community of patrons whose leadership ensures that Wexford's spirit of discovery continues to thrive just as it did at its beginning.

In honour of this anniversary year, a gift of €75,000 becomes part of Wexford's enduring legacy.

Because of you, the curtain rises on a new era. If you are interested in joining the Founders Circle please contact Executive Director Suzanne Nance at [suzanne@wexfordopera.com](mailto:suzanne@wexfordopera.com)



# IRIS



# MASCAGNI

## IRIS PIETRO MASCAGNI

This year's '*opera for the heart*' marks a personal milestone for director, Rosetta Cucchi, and Mascagni specialist, conductor, Francesco Cilluffo. Rosetta's journey with the Festival began in 1995 when *Iris* was the very first production she worked on; now, she returns to it alongside Cilluffo, who debuted at Wexford with Mascagni in 2015. His reputation as a definitive interpreter of Mascagni's lush scores is further cemented by this, his third production of the composer's work at the Festival.

Mascagni is best known for his first opera to be staged, *Cavalleria rusticana* (Rustic chivalry), the work that changed operatic history by launching the *verismo* movement with panache and which opened in the Italian capital in 1890 to overwhelming acclaim. *Iris* – the fifth of his works to grace the Wexford stage – offers something more ethereal. Set not in a literal Japan, but a mythical one, it is a striking, symbolic masterpiece exploring the fragility of innocence in an uncaring world.

The opera invites us into the inner world of Iris, a young girl lured from her home into the city's dark pleasure quarters. A victim of societal corruption and exploitation, Iris remains luminous and untouched even as the world around her grows monstrous. She is a figure of tragic isolation – an object to be desired or judged, navigating a path toward a harrowing yet transcendent end. Musically staggering, powerful and provocative, *Iris* features one of the most dramatic choral sequences in the entire opera repertoire. The magnificent '*Hymn to the Sun*' bookends the opera, serving as both a powerful prologue and a redemptive, mystical epilogue.

This is a sensory feast – a rare opportunity to experience Italian opera at its most atmospheric and emotionally raw.

### OPERA IN THREE ACTS

Music by Pietro Mascagni  
Libretto by Luigi Illica

First performance  
22 November, 1898 at the  
Teatro Costanzi in Rome  
Previously staged at  
Wexford Festival Opera in  
October 1995

### CREATIVE TEAM

Conductor  
**Francesco Cilluffo**  
Stage Director  
**Rosetta Cucchi**  
Set Designer  
**Tiziano Santi**  
Costume Designer  
**Claudia Pernigotti**  
Video Designer  
**Thomas Achitz**

### CAST INCLUDES

Iris **Wen Meng Gu**, soprano  
Osaka **Joseph Calleja\***, tenor  
Osaka **Yuchen Pan\*\***, tenor  
Kyoto **Jolyon Loy**, baritone  
Il Cieco **Jihoon Kim**, bass  
Dhia / Geisha **Hannah O'Brien**, soprano  
Haberdasher **Yu Shao**, tenor

\*Joseph Calleja will sing the role  
on 15, 23, 28 and 31 Oct

\*\* Yuchen Pan will sing the role  
on 20 Oct

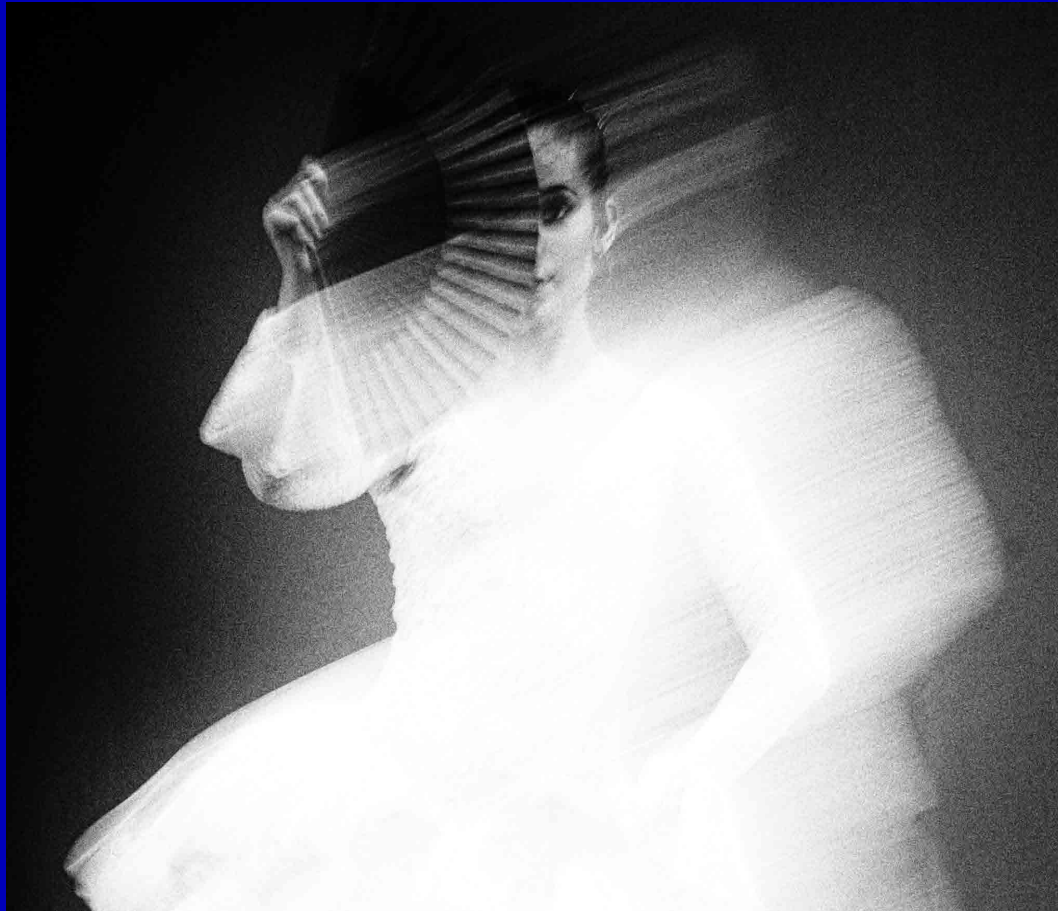
### O'REILLY THEATRE NATIONAL OPERA HOUSE

Thurs 15 Oct – 8pm  
Tues 20 Oct – 7:30pm  
Fri 23 Oct – 7:30pm  
Wed 28 Oct – 7:30pm  
Sat 31 Oct – 5pm

Tickets: €40 – €175  
Approx running time: 160  
mins (incl. 30 min interval)

Sung in Italian with  
English surtitles

# L'EQUIVOCO STRAVAGANTE



# ROSSINI

## L'EQUIVOCO STRAVAGANTE GIOACHINO ROSSINI

This year's 'opera for fun' is a joyous early work by Gioachino Rossini, a composer well known to Wexford audiences with 11 previous encounters with his works.

A sparkling farce of absurd misunderstandings, youthful wit, rapid-fire ensembles and comic excess, *L'equivoco stravagante* was Rossini's first large-scale opera. It vanished from the repertoire after falling foul of the censor due to its subversive libretto. Wexford was one of the first companies to present it in 1968.

The title means something like 'The Bizarre Misunderstanding' and premiered in Bologna in 1811, when the young composer was still only 19 years of age. This production returns following a historic public vote last summer. In a first for the Festival, audiences from 30 countries chose (by way of a vote) the 'fun' opera for the 75th Anniversary, marking the first time a production has been selected by popular demand.

Directed by Max Hoehn and conducted by Riccardo Bisatti, both making their Wexford debuts, this production is a masterclass in Rossini's signature *buffo* (comic) style. In it we meet Gamberotto, a wealthy farmer with high-society ambitions for his bookish daughter, Ernestina. While he attempts to marry her off to the rich (but dim-witted) Buralicchio, the penniless Ermanno has other plans. What follows is a whirlwind of subversion, outrageous disguises, and a 'bizarre misunderstanding' involving a fake identity that once proved too scandalous for the 19th-century censors.

*L'equivoco stravagante* is a fast-paced, playful exploration of social climbing and the lengths we go to for love. Musically brilliant, it's the ultimate 'fun' night at the opera.

### DRAMMA GIOSO (HUMOROUS DRAMA) IN TWO ACTS

Music by Gioachino Rossini  
Libretto by Gaetano Gasbarri

First performance  
26 October, 1811 at the  
Teatro del Corso, Bologna  
Previously staged at  
Wexford Festival Opera in  
October 1968

### CREATIVE TEAM INCLUDES

Conductor  
**Riccardo Bisatti**  
Director  
**Max Hoehn**  
Set Designer  
**Darko Petrovich**  
Costume Designer  
**Massimo Carlotto**

### CAST INCLUDES

Gamberotto  
**Omar Montanari**,  
bass-baritone  
**Ernestina Maria Barakova**,  
mezzo-soprano  
Buralicchio  
**Gurgen Baveyan**, baritone  
Ermanno  
**Sebastian Mach**, tenor  
**Rosalia Kelly Ann Masterson**,  
soprano

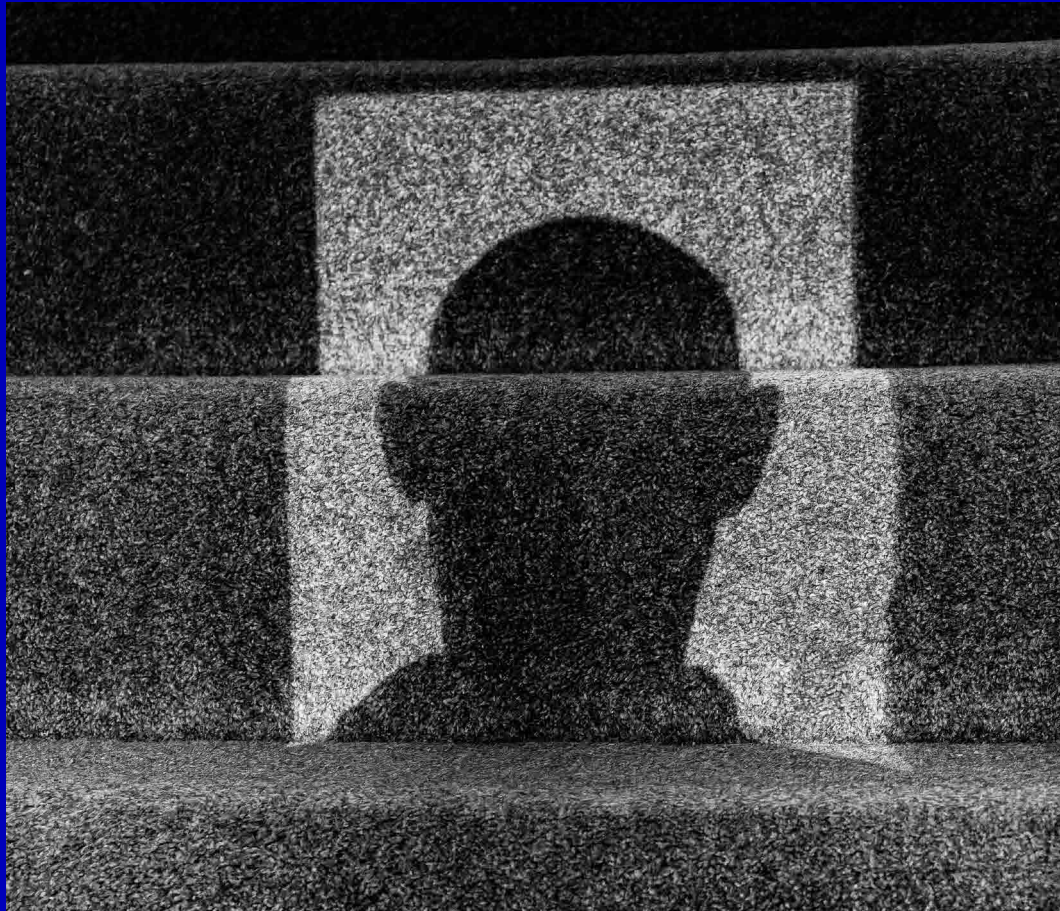
### O'REILLY THEATRE NATIONAL OPERA HOUSE

Fri 16 Oct – 7:30pm  
Weds 21 Oct – 7:30pm  
Sun 25 Oct – 5pm  
Thurs 29 Oct – 7:30pm

Tickets: €40 – €175  
Approx running time: 170  
mins (incl. 30 min interval)

Sung in Italian with  
English surtitles

# THE GAMBLER



# PROKOFIEV

## THE GAMBLER SERGEI PROKOFIEV

This year's '*opera for the head*' is Sergei Prokofiev's *The Gambler*, written in 1917 during the First World War when the composer was 26 years old and still considered to be in his *enfant terrible* phase. (Prokofiev's early years have been described as rebellious and his music of that time as 'cacophonous' and 'biting'.) The opera was not performed until 1929.

In this new production – marking the Wexford debuts of director Ivan Popovski and conductor Valentin Uryupin – nervous obsession spirals into self-destruction. Based on Fyodor Dostoevsky's 1866 novella, the libretto draws directly from Prokofiev's own gambling addiction. Set in 1865 in the fictional German spa town of Roulettenburg, everything is deliberately artificial. The opera follows the protagonist, Alexei, a young tutor, as he spirals into gambling debt while being obsessed with his employer's stepdaughter, Polina.

In the final act, the casino itself emerges as the central character, controlling the destiny of those consumed by their passion for the roulette wheel, like moths to a flame.

Prokofiev intended the work as a reaction against Romantic lyricism, instead preferring to create '*an opera in the declamatory style*', closer in technique to the stageworks of Dargomyzhsky and Mussorgsky which set musical prose in natural speech rhythms.

With its jagged, modernist score, *The Gambler* offers a chillingly relevant look at the price of desire. Place your bets on a night of operatic intensity and join us for this rare, visceral revival.

Music by **Sergei Prokofiev**  
Libretto by the composer  
after **Fyodor Dostoevsky**

First performance 29 April, 1929 at the Théâtre Royal de la Monnaie in Brussels  
Previously staged at Wexford Festival Opera in October 1973

### CREATIVE TEAM INCLUDES

Conductor  
**Valentin Uryupin**  
Director  
**Ivan Popovsky**  
Set & Costume designer  
**Maria Tregubova**

### CAST INCLUDES

**Alexei Igor Onishchenko**, tenor  
**Polina Sophie Gordeladze**, soprano  
The General  
**Alexei Botnarcuic**, bass  
**Blanche Hilary Ginther**, mezzo  
The Marquis  
**Ryan Vaughan Davies**, tenor  
Mr Astley  
**Rory Musgrave**, baritone  
Granma Babulenska  
**Clarry Bartha**, contralto  
Prince Nilsky  
**Seán Tester**, tenor

### O'REILLY THEATRE NATIONAL OPERA HOUSE

Sun 18 Oct – 5pm  
Thurs 22 Oct – 7:30pm  
Sat 24 Oct – 7:30pm  
Fri 30 Oct – 7:30pm

Tickets: €40 – €175  
Approx running time: 180 mins (incl. 30 min interval)

Sung in Russian with  
English surtitles

# CROÍ NA FÉILE



## CROÍ NA FÉILE (HEART OF THE FESTIVAL) 75TH ANNIVERSARY FUNDRAISING GALA

This landmark year, we invite you to the heart of it all.

*Croí na Féile* (pronounced kree nah fay-leh) – Irish for the Heart of the Festival – is a glittering fundraising gala celebrating 75 extraordinary years of artistic excellence, community, and the warm and welcoming spirit of Wexford that has always been central to our identity.

Expected to be a highlight of the 75th season, an international constellation of stars will grace the stage. Ermonela Jaho, Joseph Calleja, Daniela Barcellona, and Giorgi Manoshvili will perform glorious music by Giacomo Puccini, Giuseppe Verdi and more. Tickets range from €75 to €750, ensuring that everyone can be part of this special celebration.

For those who wish to play a deeper role in shaping the Festival's future, Patron Tickets at €575 and above include a charitable donation in support of our work. Patrons will also receive a signed commemorative print and enjoy a rare and memorable invitation to step onto the stage following the performance for a champagne toast with the artists. This intimate moment is a chance to stand where so many extraordinary performances have taken place.

Every ticket purchased sustains our artistic ambition, nurtures emerging talent, and ensures that Wexford continues to shine brightly on the world stage for the next 75 years.

Join us. Celebrate with us. Support the heart of the Festival.

Conductor  
Daniele Callegari

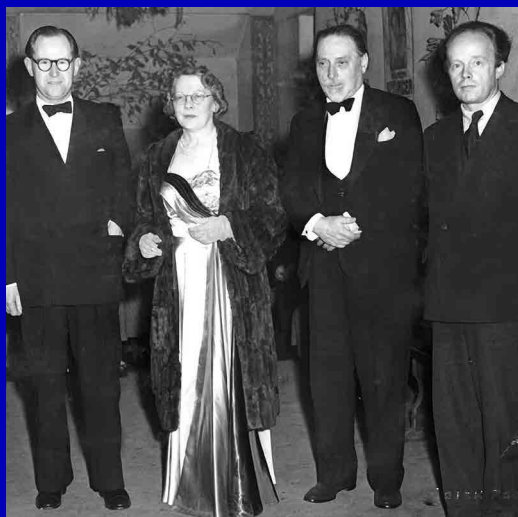
### CAST

Ermonela Jaho, soprano  
Daniela Barcellona,  
mezzo  
Joseph Calleja, tenor  
Giorgi Manoshvili, bass

O'REILLY THEATRE  
NATIONAL OPERA HOUSE  
Sat 17 Oct – 7:30pm

Tickets: €75 – €750

# THE FIRST FESTIVAL



## THE FIRST FESTIVAL

In celebration of the 75th Anniversary Festival, Wexford Festival Opera has commissioned Colm Tóibín and Alberto Caruso to present an operatic tribute to the Festival that Colm has loved and championed for decades.

Colm Tóibín, one of Ireland's leading artistic figures, has a long history with WFO that began when he attended a dress rehearsal of *The Pearl Fishers* (1971) as a student in Wexford town. Colm has seldom missed a Festival since. His enthusiasm for, and enormous knowledge of, music and theatre has inspired Artistic Director Rosetta Cucchi, and her creative relationship with Colm is one of the most important partnerships of Rosetta's directorate. *The First Festival* reunites the celebrated novelist with his regular collaborator, composer Alberto Caruso, following on from their two pocket operas: *The Master* (2022) and *Lady Gregory in America* (2024).

Set in the local Tax Office in 1951, *The First Festival* celebrates the joy that erupts in Wexford as word spreads that an opera festival is starting in the town. When a motley crew of international singers and artists arrive in Wexford, singing arias of love and regret, long pent-up passions are unleashed on a town that will never be the same again.

Written specifically for young voices on the Wexford Factory programme, this ensemble work is designed to showcase the Factory participants' emerging talents whilst challenging their developing skills, and delighting audiences.

WEXFORD FACTORY SPONSOR



WEXFORD FACTORY SUPPORTERS



**WORLD PREMIERE**  
A WEXFORD FESTIVAL  
OPERA COMMISSION

Libretto by Colm Tóibín  
Music by Alberto Caruso

### CREATIVE TEAM INCLUDES

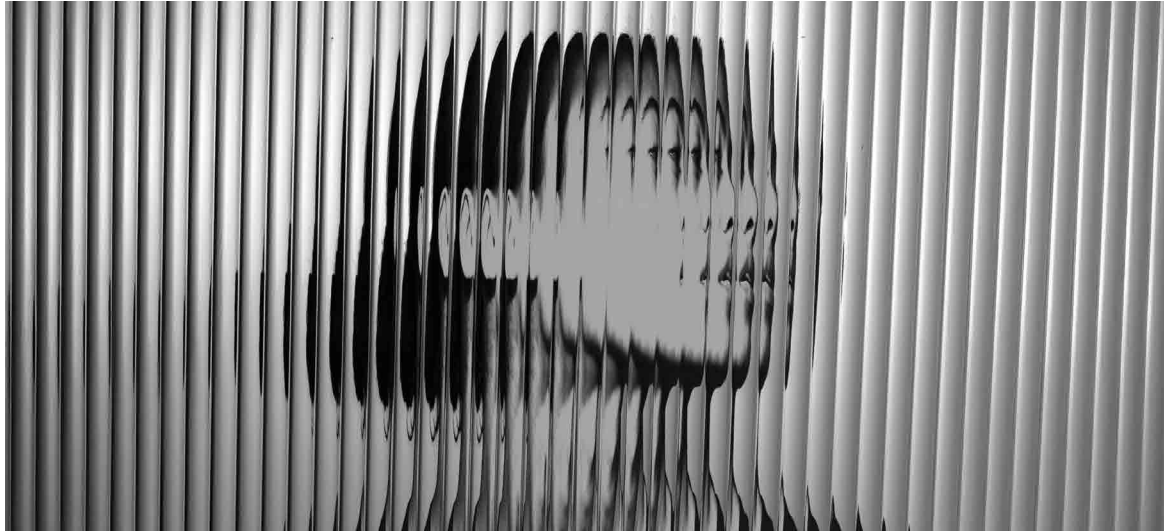
Conductor  
**Andrew Synnott**  
Stage Director  
**Conor Hanratty**  
Costume Designer  
**Frances White**

Mon 19 Oct – 7:30pm\*  
Sat 24 Oct – 11:00am  
Mon 26 Oct – 5pm  
Thurs 29 Oct – 11:00am

**\*1950's Themed Night:**  
Seventy-five years ago, in 1951, the story began. For the opening night of *The First Festival*, we're returning to that first chapter. Dress up in 1950s style attire and join us for an evening of vintage glamour, celebration, and operatic drama. Dust off your pearls and poodle skirts, and ready that sharp suit!

Tickets: €20 – €60  
Approx running time:  
1 hour (no interval)

Sung in English



## THE ROSE OF CASTILE

The opera chosen for the first 'Wexford Festival', as it was known in 1951, was by Irish composer, Michael William Balfe (1808 – 1879) who had lived in Wexford for six years before his family moved to Dublin. Although not as well-known as the composer's most notable *The Bohemian Girl*, the choice of opera was an early indicator of the programming philosophy that established Wexford on the international scene.

Like a lot of Balfe's operas, the piece is rarely performed today. An opera written in three acts, it follows Elvira, Queen of León, who disguises herself as a peasant to avoid a forced marriage to Don Sebastian, arranged by the King of Castile. Along the way, she falls in love with a muleteer named Manuel, who is actually the King of Castile in disguise.

Libretto by **Augustus Glossop Harris and Edmund Falconer**, after the libretto by **Adolphe d'Ennery and Clairville** (alias of Louis-François Nicolaïe (1811–1879) for Adolphe Adam's *Le muletier de Tolède* (1854) .  
Music by **Michael William Balfe**

First performance 29 October 1857, at the Lyceum Theatre, London  
Previously staged at Wexford Festival Opera at the first festival in 1951

Music Director **Rebecca Warren**  
Stage Director **Heather Hadrill**  
Set & Costume Designer **Lisa Krügel**

### JEROME HYNES THEATRE NATIONAL OPERA HOUSE

Fri 16 Oct – 3pm  
Tues 20 Oct – 11am  
Thurs 22 Oct – 11am  
Sat 24 Oct – 3pm  
Mon 26 Oct – 11am  
Thurs 29 Oct – 3pm  
Sat 31 Oct – 11am

Tickets: €30 | Approx running time: 70 mins

Sung in English



## MUCH ADO ABOUT NOTHING

Following the presentation of another Balfe opera at the 1963 festival, it became Wexford's stated intention to revive additional operas by Irish composers; hence this Stanford piece was staged in the following year.

In this faithful adaptation of Shakespeare's great romantic comedy, Stanford beautifully captures the emotional complexity of the characters and their shifting relationships, effortlessly managing the shifts between sparkling comedy and darker intrigue. This work of lyricism and Shakespearean vitality will enjoy a renewed spotlight for the 75th anniversary.

Following on from the Festival's critically acclaimed success with Stanford's *The Critic* in 2024, WFO is proud to present a new production of *Much Ado About Nothing*, continuing the exploration of the composer's work.

Libretto by **Julian Sturgis** after **Shakespeare**  
Music by **Charles Villiers Stanford**

First performance 30 May, 1901  
Royal Opera House, Covent Garden  
Previously staged at Wexford Festival Opera in October 1964

Music Director **Christopher Knopp**  
Stage Director **Aoife Spillane-Hinks**  
Set & Costume Designer **Lisa Krügel**

### JEROME HYNES THEATRE NATIONAL OPERA HOUSE

Sat 17 Oct – 3pm  
Wed 21 Oct – 3pm  
Fri 23 Oct – 3pm  
Sun 25 Oct – 11am  
Wed 28 Oct – 11am  
Fri 30 Oct – 11am

Tickets: €30 | Approx running time: 90 mins

Sung in English



## STILL, LIFE ...

Commissioned by WFO, composer-in-residence Ailís Ní Ríain has created an entirely original work combining elements of opera, video, imagery and text.

Ní Ríain works in the areas of concert music, site responsive installation and public art, opera, electro-acoustic and music-theatre. She is deaf/hard of hearing.

Inspired by a short story by William Goyen, *Still, life...* a site-responsive, installation-opera investigates a small town's reaction to a man who decides to sit on top of a flagpole and stays there for forty days without explaining why. The work explores the collision between individual mystery and collective conformity and considers the way society experiences mystery and individuality. It is a wonderful opportunity for the community to premiere a brand-new work, and more on an international stage.

**WORLD PREMIERE**  
A WEXFORD FESTIVAL  
OPERA COMMISSION

Lyrics and Music  
Ailís Ní Ríain

**THE GRAIN STORE AT  
STONEBRIDGE**  
Thurs 15 Oct – 5pm  
Tues 20 Oct – 4:30pm  
Fri 23 Oct – 4:30pm  
Sun 25 Oct – 2pm  
Wed 28 Oct – 4:30pm  
Fri 30 Oct – 4:30pm

Tickets: €25  
Approx running time: 1 hour

PRODUCTION SPONSOR

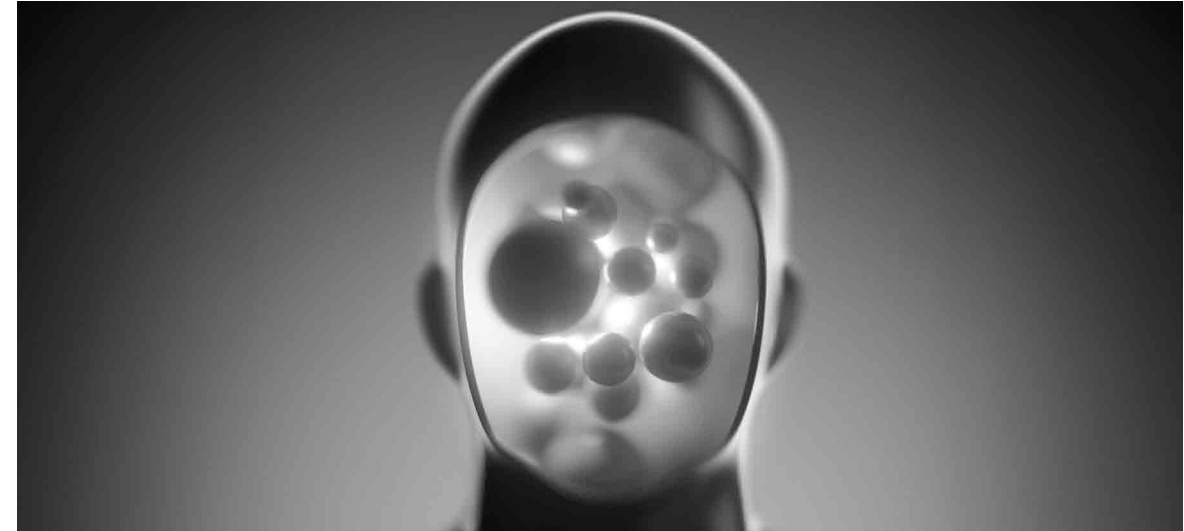
**enÉrgia group**

VENUE PARTNER

**TALBOT  
COLLECTION**

SUPPORTED BY

**LIDLAW  
OPERA  
TRUST**



## THE NEXT 75 (SONG CYCLE)

Imagine Wexford Festival Opera 75 years from now. Step into the future with a world-premiere song cycle from the brilliant minds of acclaimed novelist Colm Tóibín and composer Conor Linehan.

Across three nights, experience 15 brand-new songs (5 premiered per night) written for soprano and tenor, with the composer himself at the piano. Imagine the landscape of Wexford's 150th Anniversary. This is a world where the tides have risen and the digital pulse has quickened – where robots fall in love and perhaps even sing arias. Yet, despite these changes and beyond the machines, some things endure – the power of the human voice, the intimacy of the duet, and the soaring beauty of music.

Join us for a late-night experience – part speculative fiction, part musical masterpiece – as we look towards the next three-quarters of a century.

Creative Project & Lyrics  
Colm Tóibín  
Music  
Conor Linehan

**GREEN ACRES**  
Tues 20 Oct – 11pm  
Wed 21 Oct – 11pm  
Thurs 22 Oct – 11pm  
Wed 28 Oct – 11pm  
Thurs 29 Oct – 11pm  
Fri 30 Oct – 11pm

\*Please note: Each evening will feature five songs. The Song Cycle programme is repeated in week two.

Tickets: €25  
Approx running time: 15 mins

Sung in English

HOSPITALITY PARTNER





Photo: Pádraig Grant

## GALA CONCERT

For many years, the Gala Concert has been one of the Festival's most cherished traditions.

On this extraordinary evening, our artists step beyond their roles to share the music they truly love including the arias and songs that have shaped their journeys and captured their hearts. With warmth, humour, and brilliance, they take us on a sparkling journey through opera and beyond.

Every performer generously donates their time and talent, making this not only a magical musical celebration but also a powerful act of support for the Festival's artistic future.

Join us for an unforgettable night of artistry, intimacy, and generosity!

Early booking is advised.

**O'REILLY THEATRE  
NATIONAL OPERA HOUSE**  
Sun 25 October – 9:30pm  
Tickets: €75  
Approx running time: 90 mins



Photo: Pádraig Grant

## NEW DUBLIN VOICES

New Dublin Voices is a leading Irish chamber choir founded by conductor Bernie Sherlock.

Presenting innovative and exciting concert programmes, they range in style and period from medieval to contemporary. The ensemble has given numerous Irish and World premieres, exploring the music of living composers as well as traditional music.

This hugely popular concert is performed in the magnificent Neo-Gothic Church of the Immaculate Conception. Situated in the heart of Wexford town, it offers an exquisite acoustic experience just a short stroll from the National Opera House.

Conductor **Bernie Sherlock**  
**CHURCH OF THE IMMACULATE  
CONCEPTION, ROWE STREET**  
Mon 26 Oct – 2pm  
Tickets: €30  
Approx running time: 80 mins



Photo: Pádraig Grant

## LUNCHTIME RECITALS

A much-loved cornerstone of the Festival, our Lunchtime Recitals offer the rare opportunity to hear our principal singers up close in a relaxed and intimate setting.

Here, the voices that command the mainstage reveal a more personal side, joined by exceptional pianists whose artistry brings richness and variety to each programme. From operatic arias and lieder to oratorio and beloved classics, every recital promises a distinctive musical journey.

Taking place in the beautiful surroundings of St Iberius Church and the National Opera House, each performance features different artists and repertoire, which makes every occasion unique!

Demand is always high, and early booking is strongly advised.

The full line-up will be announced this summer.

### ST IBERIUS CHURCH

Fri 16 Oct  
Sat 17 Oct  
Mon 19 Oct  
Wed 21 Oct  
Thurs 22 Oct  
Sat 24 Oct  
Tues 27 Oct  
Thurs 29 Oct

### O'REILLY THEATRE NATIONAL OPERA HOUSE

Tues 20 Oct  
Fri 23 Oct  
Wed 28 Oct  
Fri 30 Oct  
Sat 31 Oct

Tickets: €25  
All recitals start at 1pm  
Approx running time: 55 mins

Enjoy one of the Lunchtime Recitals as part of a Daytime Events package. See page 35 for more details.

## 'WHISKY GALORE' A TASTING IN HONOUR OF SIR COMPTON MACKENZIE

Raise a glass to one of Wexford's most unexpected founders.

Sir Compton Mackenzie, celebrated Scottish novelist, author of 'Whisky Galore', and founder of Gramophone magazine, played a pivotal role in the early conversations that led to the creation of Wexford Festival Opera. During a visit to Wexford, he encouraged the bold idea of establishing an opera festival in this Irish harbour town. The rest is history.

In his spirit, we gather at Green Acres for an afternoon tasting that brings together a few great pleasures: fine Scottish whisky, fine Irish whiskey, and unforgettable opera.

Over the course of an hour, guests will sample three distinctive pours, each thoughtfully paired with a carefully selected recorded aria. As flavours unfold in the glass, great voices will fill the room, inviting guests to savour the harmony between music and malt.

An hour of warmth, conviviality and shared enjoyment in honour of 75 remarkable years.

Sláinte.



### GREEN ACRES

Mon 19 Oct  
3 – 4pm  
Tickets: €75



## BACKSTAGE & BREAKFAST TOUR

Step behind the curtain and begin your Festival day with a little insider magic.

Join us for a guided morning tour of Ireland's renowned National Opera House, where you will explore the spaces audiences rarely see. An architectural landmark in the heart of Wexford, you'll walk the backstage corridors, stand on the stage, and discover how this remarkable house prepares each day to bring opera to life.

After your behind-the-scenes experience, you'll make your way to La Vista to enjoy breakfast with sweeping views across Wexford. Freshly brewed coffee, delicious quiche and relaxed conversation provide the perfect setting to reflect on the Festival's rich history and the performances yet to come.

### NATIONAL OPERA HOUSE AND LA VISTA CAFÉ

Thurs 22 Oct | 9 – 11am  
Thurs 29 Oct | 9 – 11am  
Tickets: €75



*Adina*, 2019  
Photo: Clive Bardal/ArenaPal



Photo: Pádraig Grant

## DAYTIME EVENT PACKAGES

Make a day of it at Wexford Festival Opera.

Our Daytime Event Packages offer the perfect introduction to the Festival – whether enjoyed individually or shared with friends. Each package includes a Lunchtime Recital or Pocket Opera, performed in the beautiful surroundings of St Iberius Church or in the O'Reilly Theatre at the National Opera House, followed by a leisurely lunch at Whites of Wexford.

Lunch includes a starter, main course, and tea or coffee – an opportunity to relax, reflect, and savour the music together.

It's an inviting way to experience an art form that has captivated Wexford audiences for over seventy years.

For groups of 10 or more, the group organiser receives a complimentary package ticket.

All bookings (individual and group) must be made through the Box Office:  
+353 53 912 2144

Tickets:

**Package 1**

Lunch with Lunchtime  
Recital €50

**Package 2**

Lunch with Pocket Opera  
€55



## IMPOSSIBLE INTERVIEW

### 75th Anniversary Edition

As part of our 75th Anniversary celebrations, the Festival's much-loved *Impossible Interview* returns for a very special edition.

Blending theatre, music and imagination, this unique event invites you to step across time and encounter one of opera's great figures as you've never experienced them before. Through wit, insight, and carefully chosen musical moments, past and present meet in a conversation that is by turns revealing, entertaining and thought-provoking.

Leading the conversation once again this year will be acclaimed writer and critic Michael Dervan, whose insight and curiosity will guide our distinguished, and entirely unexpected, guest through an unforgettable exchange.

For our anniversary season, a very special figure will be summoned, but their identity remains under wraps! You'll simply have to join us to discover who dares to answer the questions.

An unmissable celebration of opera, history and 75 years of Wexford Festival Opera.

**JEROME HYNES THEATRE |  
NATIONAL OPERA HOUSE**  
Weds 21 Oct – 11am  
Tickets: €15  
Approx running time: 75 mins



## POP-UP EVENTS

Now one of the Festival's most eagerly anticipated traditions, our Pop-Up Events bring bursts of musical and artistic magic to unexpected corners of Wexford.

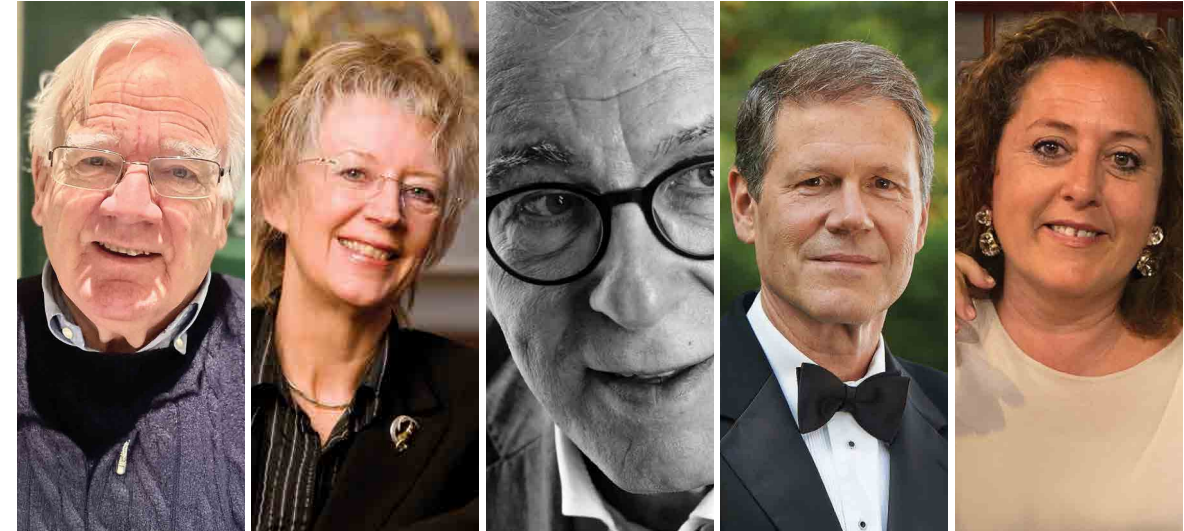
Featuring WFO artists in spontaneous moments of song and theatrical flair, these surprise performances transform everyday spaces into stages, inviting audiences to encounter opera and the arts in the most joyful and welcoming way.

These events are a celebration of the remarkable town that has embraced the Festival for generations. Streets, shops and public spaces become part of the performance, turning the town itself into a stage and creating a shared experience that is unique to Wexford.

An essential part of the Festival atmosphere – keep your eyes and ears open!

**FREE | VARIOUS LOCATIONS  
WEXFORD TOWN**  
Full schedule published in  
October

EVENT SPONSOR



## DR TOM WALSH LECTURE

From Dr Tom Walsh's founding of the Festival in 1951 to our 75th year, Wexford has always been about vision. This year, we celebrate that legacy by bringing together five Artistic Directors representing the illustrious past and vibrant present of the Festival.

Current Artistic Director Rosetta Cucchi (appointed in 2020) will moderate a conversation with past Artistic visionaries: Brian Dickie (1967 – 1973), Elaine Padmore (1982 – 1994), Luigi Ferrari (1995 – 2004) and David Agler (2005 – 2019). These five artistic directors will share the same stage for the very first time.

Together, they represent over half a century of artistic vision, from the restoration of forgotten masterpieces to Wexford's rise as a global cultural phenomenon. This rare gathering offers an intimate look behind the curtain of one of the world's most beloved festivals.

Join us for what promises to be a morning of expert insight and rare anecdotes into Wexford's incredible journey. Don't miss this once-in-a-lifetime conversation.

**WHITES OF WEXFORD**  
Sun 18 Oct – 11am

Tickets: €30 (incl. tea/coffee  
and biscuits)  
Approx running time: 60 mins

### PANEL

Brian Dickie  
Elaine Padmore  
Luigi Ferrari  
David Agler  
Rosetta Cucchi

Supported by  
Victoria Walsh Hamer,  
daughter of the Festival's  
Founder, Dr Tom Walsh



Photo: Pádraig Grant

## THE FACTORY CONCERT

The Factory Concert is a vibrant showcase celebrating the exceptional young singers and repetiteurs of the Festival's Wexford Factory.

Now embarking on the first year of a new two-year programme, this dynamic ensemble comes together to present an evening of fresh talent, artistry and promise. Offering a glimpse of the next generation of opera professionals, the concert captures the spirit of discovery and development that lies at the heart of the Festival.

Join us for an inspiring performance that marks the beginning of their journey and perhaps the start of many remarkable careers. Through the Wexford Factory, Wexford Festival Opera continues its long-standing commitment to nurturing and supporting the next generation of opera stars and lovers.

### O'REILLY THEATRE NATIONAL OPERA HOUSE

Sun 27 Sept – 7pm  
Tickets: €20  
Approx running time: 90 mins



Photo: Patrick Browne

## THE WEXFORD FACTORY MENTORING THE NEXT GENERATION

At the heart of Wexford Festival Opera, is our professional development programme for emerging opera artists. It offers training, rehearsal time and performance opportunities for singers, repetiteurs and stage managers at a pivotal stage in their careers. Participants work within a professional international festival environment and benefit from close collaboration with our Artistic Director and senior creative teams, offering an invaluable opportunity for mentorship, artistic dialogue and career development.

In our 75th year, we are making bold plans to continue expanding this programme with new initiatives. We remain dedicated to training and mentoring the next generation of opera professionals, on the stage and behind the scenes, including lighting and costume designers, technical directors, and

production specialists.

By investing equally in artistic and technical talent, the Factory strengthens the entire creative infrastructure of opera. This expanded vision is designed not simply to grow a programme, but to help shape the future standards, sustainability and ambition of the operatic industry itself.

We invite you to be part of that future. Your support will directly enable emerging artists and technical professionals to train, create and build lasting careers at the highest level. By investing in the Factory, you are investing in the next generation of opera.

WEXFORD FACTORY SPONSOR



WEXFORD FACTORY SUPPORTERS



# SUPPORTING WEXFORD FESTIVAL OPERA



## THE DIFFERENCE YOU MAKE

For 75 years, Wexford Festival Opera has thrived because of one essential force: belief in the extraordinary.

**Belief in discovery.**

**Belief in artistic courage.**

**Belief in the power of opera to connect and inspire.**

Your generosity, as a Friend and donor, makes this possible. Because of you, we:

Discover and champion emerging artists

Restore rare operatic treasures

Create unforgettable performances that resonate in Wexford and around the world

Every rising artist on the stage in Wexford. Every rediscovered masterpiece. And every standing ovation has happened because you have stood with us.

**75 YEARS:  
A MILESTONE  
MADE POSSIBLE BY YOU**

Our 75th anniversary is a testament to artistic vision, to Wexford, and to the steadfast loyalty of Friends like you.

Your support has sustained artistic risk-taking, fuelled international ambition, and ensured Wexford remains a beacon of operatic discovery.

This anniversary celebrates not only our history, but your role in shaping it.



Dinner at Eight, 2018. Photo: Clive Barda/ArenaPal



Landmark years call for bold steps.

As we look ahead, we invite you to deepen your Friendship and help secure the Festival's future. Many are choosing to mark this special anniversary by renewing their support at a higher level, or by making a commemorative gift.

By increasing your commitment, you will help:

[Safeguard artistic innovation](#)

[Support the next generation of artists](#)

[Preserve Wexford's distinctive place in the world of opera](#)

[Ensure the Festival thrives for generations to come](#)

## CELEBRATE 75 YEARS SECURE THE NEXT 75

### Make Your Gift Go Further

Gifts can be made in a tax-advantageous way through our Irish, UK, and US Charitable Trusts – allowing your support to have even greater impact at no additional cost to you.

### Friends based in Ireland

Contributions at Ensemble+ and above can attract tax relief of up to **45%**, providing substantial added funding to the Festival at no extra cost to you.

### Friends based in the UK

When you renew through the Wexford Festival UK Trust and complete a Gift Aid declaration, your gift increases in value by **25%**. Higher-rate taxpayers may also benefit from additional personal tax relief.

In a landmark 75th anniversary year, this is one of the simplest and most powerful ways to deepen your Friendship, and maximise the difference you make.

### Endow a Seat

Create a lasting legacy by endowing a seat in your name, or in honour of a loved one. Your dedication will live on at Ireland's National Opera House, the home of Wexford Festival Opera, for generations to come. We would be honoured to share in your legacy.



The Golden Ticket, 2010. Photo: Clive Barda/ArenaPal

## BECOME AN ARTISTIC BENEFACTOR

The Artistic Benefactors Programme enables Wexford Festival Opera to attract some of the opera world's most exciting singers, directors, and conductors.

As a Benefactor, you will be recognised in the Festival Programme and receive complimentary mainstage tickets to see the artist or creative team member you support. You will also have opportunities to connect personally with the artists and gain rare insight into their creative process. As part of this special circle, you play a direct role in shaping the Festival's artistic future.

### Maestro Level (Support – €10,000)

The Maestro level provides support for the most essential artists at the Festival, our conductors, directors, and mainstage stars. Our Maestro benefactors ensure we can attract the talent to make the Festival an artistic voyage each year.

### Principale Level (Support – €5,000)

At Principale level our benefactors can support emerging onstage talent or a more established singer. Opera is a career that demands intense focus and dedication, and it is encouraging for performers to know that they have support in the most practical way.

Over the years, this programme has fostered lasting and meaningful relationships between artists and patrons. We would be delighted to share more about this opportunity and welcome you into this special community.

## YOUR SUPPORT WILL LEAVE A LASTING MARK ON THE ARTISTS AND THE ART YOU HELP BRING TO LIFE!

### Your Legacy at Wexford

For so many of us who love Wexford Festival Opera, the story began decades ago.

Perhaps you came for the first time as a young person. Perhaps you were brought by a parent, a teacher, or a friend. Perhaps you have returned year after year, watching generations of artists take the stage and become part of your life.

What began in 1951, with a small group of people and a shared passion, became something extraordinary. It has endured because of people like you, who believe in our mission.

By remembering Wexford Festival Opera in your Will or Estate Plans and supporting the Wexford Legacy Fund (or the 1951 Legacy Fund), you will help ensure that this remarkable Festival continues to inspire, discover, and bring people together for generations to come.

If you have already included us in your Will, or are thinking of doing so, we would love to hear from you so that we can thank you personally for this gift.

Just as Wexford became part of your life, your legacy can become part of its future.

### Join a Production Consortium or Syndicate

Become part of the inner circle that brings opera to life.

Membership of a Production Consortium offers an extraordinary and intimate connection to Wexford Festival Opera's grand-scale productions. As a valued supporter, you do not only attend the performance, but you also help make it possible!

From the first notes on the score to the thrill of opening night, you'll journey alongside a community of passionate patrons who share your commitment to artistic excellence. Your support directly fuels the creativity on stage, sustaining the artists, craftspeople, and visionaries who transform imagination into unforgettable performance.

As a Consortium member, you'll enjoy privileged access to the creative process: exclusive behind-the-scenes insights, opportunities to witness rehearsals, and moments of connection with the artistic team and performers as characters take shape and music finds its voice.

For more information about making a legacy gift or becoming part of a production consortium please contact: Head of Development, Ann Marie Dalton at [adalton@wexfordopera.com](mailto:adalton@wexfordopera.com)



Photo: Pádraig Grant

## THE ENGINE ROOM

### Spotlight on the Lighting Team

This year, once again, our Engine Room will focus on the lighting department. In the second year of this two-year cycle, we will continue to shine a light on our six-member lighting team, supporting all seven productions. Over two months, they will collaborate with conductors, directors, designers, and technicians, tracking scores, cueing moments, and shaping the atmosphere that brings each performance to life.

Our team blends fresh talent, local creatives, and seasoned professionals with international experience. Together, they will share skills, learn from one another, and work alongside some of the world's leading opera producers.

### Gifts of Shares

Donating shares of stock is a highly effective and tax-efficient way to support Wexford Festival Opera.

Gifts of publicly quoted shares to an eligible charity may qualify for tax relief based on the full market value of the shares at the time of transfer.

By choosing to make a gift of shares, you help sustain ambitious productions, support emerging talent, and ensure that Wexford Festival Opera continues to thrive as one of Ireland's most distinctive cultural events.

Our Development Team will be pleased to guide you through the straightforward transfer process and liaise with your financial advisor if required. All enquiries are handled in confidence.

### Corporate Support

Partner with one of Ireland's most distinctive and internationally celebrated cultural events.

Wexford Festival Opera offers companies powerful and imaginative ways to connect with audiences, clients and communities. We work collaboratively with our corporate partners to create tailored partnerships that deliver real impact – for your business and for the Festival.

As a corporate partner, you can benefit from:

[Exclusive access and premium hospitality experiences](#)

[High-profile brand visibility across national and international platforms](#)

[Meaningful alignment with CSR and ESG priorities](#)

[Engagement opportunities for staff, clients and stakeholders](#)

From sponsoring a mainstage production to supporting our transformative community outreach and education programmes, your partnership can make a tangible difference while positioning your brand at the heart of artistic excellence.

You may also wish to join our Business Circle, a dynamic network of companies committed to sustaining world-class opera in Ireland.

Let's create something exceptional together.

### Foundations and Trusts

We are proud to partner with Foundations and Trusts whose support enables Wexford Festival Opera to deliver artistic excellence alongside meaningful and lasting community impact.

While internationally recognised for its mainstage productions, the Festival's work reaches far beyond the opera house. With your support, we will:

[Provide transformative music education programmes for young people and emerging artists](#)

[Deliver creative outreach initiatives in schools and community settings](#)

[Use the power of music to enhance health, well-being and social connection](#)

[Create inclusive opportunities that ensure opera is accessible to all](#)

[Sustain the skilled artists and production teams who bring each Festival to life](#)

Music has a profound ability to unite communities, build confidence, support emotional well-being, and foster a sense of belonging. Through carefully designed education and community initiatives, we extend these benefits across Wexford and beyond, ensuring that the Festival contributes not only to cultural life, but to economic and social vitality.

We are committed to building thoughtful partnerships, aligning your Foundation's priorities with clear outcomes and measurable impact.

Together, we can nurture talent, strengthen communities, and ensure that Wexford Festival Opera continues to enrich lives across Ireland and beyond.



## 75TH ANNIVERSARY GIFT



Photo: Marie Hayes



In this special 75th anniversary year, a celebratory gift honours the remarkable legacy of Wexford Festival Opera, paying tribute to its rich history while helping to shape its future.

I would like to make a 75th Anniversary Gift to Wexford Festival Trust in the sum of

€10,000    €5,000    €2,500    €1,000   €

Gifts can be made in a tax advantageous way in the UK through our UK Foundation and in the USA through The Ireland Funds. To find out more information please contact [adalton@wexfordopera.com](mailto:adalton@wexfordopera.com)

### Methods of Payment

I enclose a cheque payable to 'Wexford Festival Trust'

PLEASE DEBIT MY  Mastercard    Visa    Visa Debit    Laser

CARD NUMBER

EXPIRY    CCV

NAME (AS IT APPEARS ON CARD)

You can also give a gift in the form of shares. Please see detailed information on page 46.

Thank you for supporting Wexford Festival Opera and in doing so, for keeping our founders' vision alive – a vision that continues to inspire, uplift, and bring extraordinary music to life.

## MEMBERSHIP LEVELS

### BRAVURA €2,000

Bravura Friends champion the artistic excellence of Festival at the highest level of our Friends Programme. Members enjoy a dedicated concierge booking service during the priority booking period, with first access to tickets. They are also invited to exclusive VIP interval drinks, Bravura lunches and special opportunities to meet our artists and Festival team.

### CABALETTA €1,000

Cabaletta Friends are provided with the highest access to priority booking, coupled with VIP access to both the Friends and Founders interval lounges, in recognition of their support of the Festival's Pocket Opera performances.

### ARIA €500

Through their support, Aria Friends provide wonderful opportunities for a range of promising young artists selected from members of the chorus and/or principal singers. They ensure the continued development of singing talent.

### ENSEMBLE+ €300

Ensemble+ provides additional benefits for those seeking the best seating and priority upgrade privileges. Contributions at this level (and above) may attract a potential tax rebate up to 45%, making your gift to Wexford Festival Opera more impactful.

### ENSEMBLE €185

Ensemble supporters are at the heart of the Festival, bringing the warmth and camaraderie synonymous with the 'Wexford Experience'. Ensemble Friends contribute directly to the wonderful Festival Orchestra.

### PRELUDE €80

Prelude is our exclusive under-40s membership, designed to open the door to world-class opera. Enjoy discounted tickets to mainstage productions while immersing yourself in the full Festival experience. It's the perfect way to spark a lifelong love of opera and connect with a vibrant community of fellow enthusiasts.

For more details please contact Friends Team on **+353 53 916 3525 | [friends@wexfordopera.com](mailto:friends@wexfordopera.com)**



Photo: Patrick Browne

## WFO NEWS

### VOLUNTEER OF THE YEAR AWARD 2025

#### Supporting our Volunteer Programme since 2013

Volunteering with Wexford Festival Opera since 1991, and chosen through a public vote by fellow volunteers, board members, and staff, Davy Lynch was last year honoured with the title of 2025 Ecclesiastical / Wexford Festival Opera Volunteer of the Year.

Davy first joined the Festival as one of just three drivers. Over a dedicated 35-year tenure, most recently as Head of Volunteer Drivers, he has become a cornerstone of the event. Known for greeting everyone with a trademark smile and a 'no task is too difficult' attitude, Davy is a very popular member of the volunteer family.

We would like to thank our Volunteer Programme sponsor, Ecclesiastical Insurance, who have been a long-term sponsor and great supporter of the Festival, helping us maintain a volunteer programme of over 400 volunteers as well as staging a world-class opera festival each year. Ecclesiastical Insurance is Ireland's leading

specialist insurance company serving education, faith, heritage and charity sectors, providing insurance and services for those who care about their communities and the environment in which they live and work.

#### Commenting on Davy's award, David Lane said:

'Davy embodies the true spirit of volunteerism – dedicated, positive, and always willing to go the extra mile to make the Festival such a special experience. Volunteers like Davy are at the heart of Wexford Festival Opera's success. At Ecclesiastical Ireland, proudly part of the Benefact Group, we are proud to celebrate the volunteers whose passion brings so much to Irish cultural life.'

To further celebrate this spirit, the Festival and Ecclesiastical launched 'The Festival Memory Bank' – an archival project collecting interviews and stories from the 400+ volunteers who work across all areas of the Festival, from front of house to costume and backstage.



Photo: Patrick Browne

### THE DANONE IRELAND OUTSTANDING ARTISTS AWARD

In 2025, Seán Tester (tenor) and Frasier Hickland (pianist) were awarded the Danone Young Outstanding Artists Award. The award, now in its fifth year, has evolved to celebrate two recipients and is part of the company's long-term partnership with Wexford Festival Opera. The partnership also sees Danone support a main stage production each year.

The award includes a bursary for the chosen individuals and was given to the two young artists performing at Wexford Festival Opera to support their career aspirations. Both artists were also participants in the Wexford Factory programme.

#### Seán Tester said:

'It means a lot to know that this support is there for emerging singers like me as we take our next steps into the professional world. This bursary will make a real difference as I begin to build my career, and I'm so grateful for the encouragement and support of the Festival at this crucial juncture between completing my studies and professional life as an operatic tenor.'

#### Frasier Hickland said:

'It is an honour to be the first pianist to be given this award, and it acknowledges the work that répétiteurs do behind-the-scenes of an opera to ensure a good performance when the orchestra arrives. This award will give me further opportunities to advance my career and development, in addition to being a proud ambassador for the Festival.'





## SHARE YOUR MEMORIES TO THE FESTIVAL MEMORY BANK

To celebrate the spirit of volunteerism, the Festival launched The Festival Memory Bank in partnership with Ecclesiastical. This archival project honours the stories of the 400+ volunteers – past and present – who work tirelessly behind the scenes in everything from front-of-house and driving to costume and backstage.

Ecclesiastical also supports the Festival to create a video interview series featuring memories and stories from past and current Festivals. This collection captures the heart of the Festival through stories from our volunteers, audience members, and staff. All of these videos are available to watch on our YouTube channel.

### We'd Love to Hear from You

In this landmark 75th anniversary year, we are more committed than ever to preserving our shared history. Whether you have a story from the early days, or a favourite moment from down through the years, we would love to hear as many of your memories as possible.

To share your memory, please email [archive@wexfordopera.com](mailto:archive@wexfordopera.com)



## HISTORICAL TOURS

As part of your Festival experience, why not explore Ireland's Ancient East and join one of the very popular Festival Historical tours, curated by local historian and 'Friend' of Wexford Festival Opera, Bernard Browne on behalf of Wexford Historical Society.

Part of the Festival since the early 1950s, the tours are led by expert guides and explore places of historical interest in the Town, County and Ireland's Ancient East – some well known, some lesser-known. Unless otherwise stated, tours leave the Talbot Hotel car park, at 10:30am sharp and are scheduled to return to Wexford at 1:00pm, in time to enjoy the afternoon Festival events.

No car? – don't worry. People who have cars make room for those without. Another chance to make new friends!

The tours are free and open to all.



# Mornings, only lighter.



**Marty in the Morning**  
Weekdays, 7-10am

**RTÉ lyric fm**

## BOOKING METHODS

Tickets may be booked using the following methods:

Online: [wexfordopera.com](http://wexfordopera.com)

E-mail: [boxoffice@wexfordopera.com](mailto:boxoffice@wexfordopera.com)

Telephone: **+353 53 912 2144\***

In-person:

**The National Opera House Box Office\***

Post: fill out and post the booking form on page 63:

**WFO Friends Booking**

**The National Opera House**

**High Street, Wexford**

**Y35 FEP3, Ireland**

Postal bookings is a slower method, and your requested tickets may not be available.

Additional transaction charges and postage fees, if applicable, will apply to purchases paid by credit/debit card. A charge of €2.50 for postage and packaging will apply.

Please note: if you have opted to have your tickets posted, you will receive them a minimum of six weeks prior to the event.

\*Box Office opening hours:

Monday – Saturday, 9:30am to 5:00pm

## BOOK YOUR TICKETS ONLINE

Friends have the first opportunity to book their Festival tickets online via the Festival website: [wexfordopera.com](http://wexfordopera.com) which contains a step-by-step guide to booking your tickets online, including an option to print your tickets at home.

From the opening of priority booking, you will be able to browse and search our programme of events twenty-four hours a day and choose your own seats from the seating plan.

We recommend that you book your tickets online as this is the best way to secure your preferred tickets.

## BOOKING DATES

**Wed 22 April | 9:30am**

Priority booking for Bravura, Cabaletta, Aria and Ensemble+ Friends.

**Wed 29 April | 9:30am**

Priority booking for Ensemble and Prelude Friends.

**Wed 6 May | 9:30am**

General booking

## GENERAL INFO

The Management reserves the right to refuse admission and to change or cancel the advertised programme.

Latecomers cannot be admitted once the performance has commenced.

Please, allow ample time for traffic and parking delays.

## SPECIAL ACCESS REQUIREMENTS

The National Opera House is fully accessible for persons with restricted movement, both ambulant and wheelchair-bound

There is convenient lift access to all public spaces. Provision has been made to accommodate up to four wheelchair users and their companions in a variety of locations, each with sightlines as good as any on their respective levels. The wheelchair accessible seating areas are indicated on the seating plan. To book these tickets, you must contact the Box Office directly by telephone (+353 53 912 2144) or e-mail ([boxoffice@wexfordopera.com](mailto:boxoffice@wexfordopera.com)). If you are a wheelchair user and wish to attend Festival events in venues other than the National Opera House, please advise the Box Office at the time of booking so that we can ensure your visit is as enjoyable as possible.

## PRICING

OPERAS AND GALAS	20, 21, 22, 27, 28, 29 OCT	15, 16, 17, 18, 23, 24, 25, 30, 31 OCT	75TH FUNDRAISING GALA	GALA CONCERT	FACTORY OPERA
------------------	----------------------------	--	-----------------------	--------------	---------------

### STALLS

● Rows A – B	€115	€125	€375	€75	€40
● Rows C – P	€125	€135	€375 (Rows C – D) & €275 (Rows E – P)	€75	€40
● Side Seats 1 – 6 and 13 – 18	€100	€115	€175	€75	€40
● Side Seats 7 – 12 and 19 – 24	€85	€95	€175	€75	€40

### FOUNDERS CIRCLE

● A2 – A 27 and B – C	€175	€175	€750	€75	€60
● A1 – A 28	€165	€165	€750	€75	€50
● Side Seats	€155	€155	€575	€75	€60
■ Boxes A – B and D – E **	€75	€75	€275	€75	€40
■ Boxes C – F	€50	€50	€275	€75	€40

### UPPER CIRCLE

● Rows A–B	€135	€145	€375	€75	€50
● Rows C – E	€120	€135	€275	€75	€40
● Rows F – G	€100	€115	€275	€75	€40
● Row H *	€90	€90	€175	€75	€40
● Side Seats 112 – 118 and J1 – J7	€80	€80	€175	€75	€40
● Side Seats 119 – 122 and J8 – J11	€45	€45	€175	€75	€30
■ Boxes **	€40	€40	€75	€75	€20

### OTHER EVENTS

<b>POCKET OPERA</b>	€30
<b>COMMUNITY OPERA</b>	€25
<b>CHORAL CONCERT</b>	€30
<b>LUNCHTIME RECITALS</b>	€25
<b>DR TOM WALSH LECTURE</b>	€30
<b>THE NEXT 75</b>	€25
<b>IMPOSSIBLE INTERVIEW</b>	€15
<b>DAYTIME EVENTS PACKAGES WITH LUNCHTIME RECITAL</b>	€50
<b>DAYTIME EVENTS PACKAGES WITH POCKET OPERA</b>	€55
<b>WHISKY GALORE</b>	€75
<b>BACKSTAGE AND BREAKFAST TOUR</b>	€75

\*Prelude Friends: Seats in Row H are available for all opera performances at the Prelude price of €45. Valid until 29 May

\*\* Restricted view, prices per seat

Student Tickets: Available on request (subject to availability). Please contact box office for more information.

Information on our Refund/Return Policy may be found on page 64

# SEATING PLANS

O'REILLY THEATRE | NATIONAL OPERA HOUSE

**STALLS**

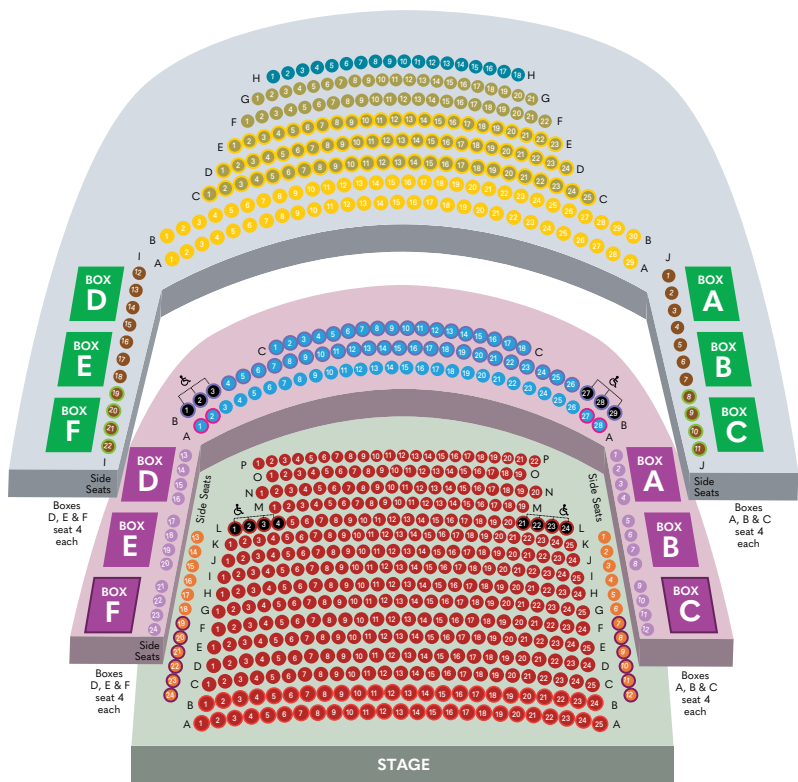
- Rows A – B
- Rows C – P
- Side Seats 1 – 6 | 13 – 18
- Side Seats 7 – 12 | 19 – 24
- Wheelchair accessible Seat

**FOUNDERS' CIRCLE**

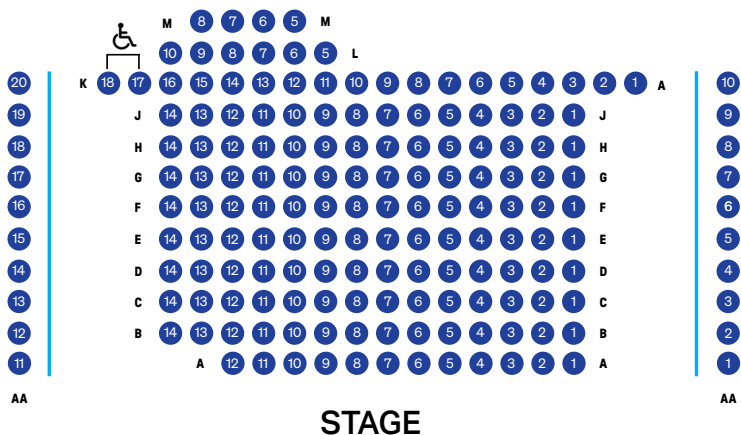
- A3 – A27 | B – C
- A1 | A28
- Side Seats
- Boxes A – B | D – E
- Boxes C | F

**UPPER CIRCLE**

- Rows A – B
- Rows C – E
- Rows F – G
- Row H
- Side Seats I12 – I18 | J1 – J7
- Side Seats I19 – I22 | J8 – J11
- Boxes



JEROME HYNES THEATRE | NATIONAL OPERA HOUSE



NAME \_\_\_\_\_

ADDRESS \_\_\_\_\_

TELEPHONE (DAY) \_\_\_\_\_ TELEPHONE (EVENING) \_\_\_\_\_

MOBILE \_\_\_\_\_ EMAIL \_\_\_\_\_

OPERAS	DATE 1ST CHOICE	SEAT PREFERENCE*	DATE 2ND CHOICE	NUMBER OF TICKETS	TOTAL PAYABLE
IRIS					
L'EQUIVOCO STRAVAGANTE					
THE GAMBLER					

Alternative dates – tickets are subject to availability  
If your first choice date is unavailable, your second choice date will be used.

\*Seat preference comments:

75TH FUNDRAISING GALA	SEAT PREFERENCE*	NUMBER OF TICKETS	TOTAL PAYABLE
CROÍ NA FÉILE SAT 17 OCTOBER			

\*Seat preference comments:

OTHER EVENTS	DATES	TIME	NUMBER OF TICKETS	TOTAL PAYABLE
THE FIRST FESTIVAL				
THE ROSE OF CASTILE				
MUCH ADD ABOUT NOTHING				
STILL, LIFE ...				
LUNCHTIME RECITALS				
CHORAL CONCERT				
GALA CONCERT				
DR TOM WALSH LECTURE				
IMPOSSIBLE INTERVIEW				
FRIENDS PARTIES				
DAYTIME EVENT PACKAGE WITH LUNCHTIME RECITAL				
DAYTIME EVENT PACKAGE WITH POCKET OPERA)				
THE NEXT 75				
WHISKY GALORE				
BACKSTAGE & BREAKFAST TOUR				

\*\* All tickets purchased are subject to the following Facility Fees:

Tickets up to €20: €2 per ticket  
 Tickets between €21–€30: €3.00 per ticket  
 Tickets €31 and over: €4.00 per ticket

**FACILITIES FEE	
SUBTOTAL	

## MAKE A DONATION

Any donations to the Festival will be gratefully accepted and acknowledged	
If you wish your tickets to be posted, please add a postage and handling fee of €2.50	
<b>TOTAL PAYABLE</b> Total from the Operas, Events and Donation (and postage, if applicable)	

### Methods of Payment

I enclose a cheque payable to 'Wexford Festival Trust'

PLEASE DEBIT MY  Mastercard  Visa  Visa Debit  Laser

CARD NUMBER

EXPIRY     CCV

NAME (AS IT APPEARS ON CARD)

Tick here if you do not wish to join our mailing list

### BOX OFFICE USE ONLY

DATE RECEIVED	ORDER NUMBER
SIGNED	DATE PROCESSED

## REFUND/RETURN POLICY

### NOW EXCLUSIVELY FOR FRIENDS

Subject to availability, tickets may be exchanged for the same opera on an alternative date. The original ticket(s) must be with the Box Office no later than 10 October to qualify for an exchange or refund.

No refunds can be given after 10 October due to pressure on the Box Office. Tickets can only be accepted for resale if the performance is sold out and the original ticket(s) must be with the Box Office before we can begin the resale process. If your ticket(s) is resold, you will be refunded, less a 15% administration fee.

This facility is a Friends only benefit. Tickets purchased by patrons who are not Friends cannot be exchanged or refunded. If a returned ticket is not re-sold, Wexford Festival Opera reserves the right to allocate the seat to a member of the Festival Company.



Maria de Rudenz, 2016  
Photo: Clive Barda/ArenaPal



## PLAN YOUR VISIT

### TRAVEL

#### TRAVELLING BY CAR FROM DUBLIN AIRPORT / DUBLIN

Wexford Town is approximately a two-hour drive from Dublin Airport. For Google Maps / GPS navigation, please use Eircode Y35 FEP3. If you are travelling from Dublin Airport you can avoid Dublin city centre by two routes:

**Route 1:** Follow the M50 Southbound and join the M11 heading towards Wexford/ Rosslare.

**Route 2:** Follow the signs for the City Centre and take the route for the Port Tunnel, follow signs for the East Link Bridge and the M11.

#### WEXFORD BUS FROM DUBLIN CITY AND AIRPORT

Wexford Bus offers the fastest, most reliable bus service between Wexford and Dublin city and airport. It is the ideal option for overseas visitors to the Festival. For details of the timetable and fares visit [wexfordbus.com](http://wexfordbus.com)

#### TRAVELLING BY FERRY TO/FROM ROSSLARE HARBOUR

The international ferry port of Rosslare is twenty minutes away by car. Connections can be made to the UK and mainland Europe.



### ACCOMMODATION

#### 4-STAR WHITES OF WEXFORD

A premier 4-star hotel perfectly situated in the heart of Wexford town. Its central location makes it the ideal choice for those attending the Festival, with the National Opera House just a three-minute walk away. Guests can enjoy a range of on-site amenities, including underground parking, a Leisure Centre, Spa, Library Bar, and the Terrace Restaurant. Conveniently located within a five-minute walk of the train and bus stations and just a 20-minute drive from Rosslare Europort. Book now and immerse yourself in the heart of the Festival at Whites of Wexford.

T: +353 53 912 2311

E: [info@whitesofwexford.com](mailto:info@whitesofwexford.com)

W: [whitesofwexford.com](http://whitesofwexford.com)

#### 4-STAR TALBOT HOTEL

The 4-star quay front Talbot Hotel is ideally located in the heart of Wexford town. This is one of the finest hotels in Wexford, boasting panoramic views of the quays and the River Slaney.

This year enjoy your stay at the Talbot Hotel with a two night Bed & Breakfast rate from €275 pps.

T: +353 53 912 2566

E: [reservations@talbothotel.ie](mailto:reservations@talbothotel.ie)

W: [talbotwexford.ie](http://talbotwexford.ie)

#### 4-STAR FERRYCARRIG HOTEL

The nationally and internationally renowned 4-star Ferrycarrig Hotel boasts one of the most inspiring locations of any hotel in Wexford or, indeed, Ireland, with sweeping views across the River Slaney. The hotel is the perfect location for your visit to the 2026 Festival.

One-night Bed & Breakfast with dinner in the award-winning Reeds Restaurant, including evening transfers to the Opera, from €129 pps midweek. Subject to availability.

T: +353 53 915 3623

E: [reservations@ferrycarrighotel.com](mailto:reservations@ferrycarrighotel.com)

W: [ferrycarrighotel.ie](http://ferrycarrighotel.ie)

#### KELLY'S RESORT HOTEL

Immerse yourself in luxury at Kelly's Resort Hotel, set along five miles of sandy beach in Rosslare, Co. Wexford. Enjoy exceptional dining at The Sea Rooms or La Marine Bistro, unwind in our award-winning SeaSpa, and take advantage of our leisure facilities, including indoor pools, a gym, and evening entertainment.

Opera Escape: one-night B&B with dinner and evening transfers to the Opera from €210 pps.

T: +353 53 913 2114

E: [info@kellys.ie](mailto:info@kellys.ie)

W: [kellys.ie](http://kellys.ie)



## GREAT PLACES TO EAT

### PRE-OPERA SUPPERS AT LA VISTA CAFÉ AND RESTAURANT

Join us for our popular Pre-Opera suppers during the Festival, served on each performance evening from 5pm in the La Vista Café and Restaurant on the third floor of The National Opera House, offering a stunning view of the harbour.

T: +353 53 914 2370  
[www.lavista.ie](http://www.lavista.ie)

### THE TERRACE RESTAURANT AT WHITES OF WEXFORD

Enjoy a warm and welcoming atmosphere overlooking a beautifully lit courtyard for a relaxed dining experience. Our chef crafts authentic dishes using the finest locally sourced ingredients. Guests can indulge in a delicious meal at the Terrace Restaurant or the Library Bar before heading to a performance at The National Opera House. For those returning from the show, our post-opera menu is available from 10:30pm to 11:30pm after each Opera performance, accompanied by live entertainment in the hotel lobby.

T: +353 53 912 2311  
[www.whitesofwexford.com](http://www.whitesofwexford.com)



### OYSTERLANE RESTAURANT AT THE TALBOT HOTEL

The award-winning Oysterlane Restaurant at the Talbot Hotel offers guests a luxurious and intimate dining experience. With a range of semi-private and private dining areas available, it is an ideal venue for celebrating special occasions.

T: +353 912 2566  
[www.talbotwexford.ie](http://www.talbotwexford.ie)

### GREEN ACRES BISTRO

Serving modern cuisine, with particular emphasis on European fare, and the occasional expeditions into other ethnic ingredients and styles, enjoy a relaxed dining experience in the unique atmosphere of Green Acres Bistro and the spacious art galleries with contemporary Irish art and sculpture.

T: +353 912 2975  
[www.greenacres.ie](http://www.greenacres.ie)

### FRANK'S PLACE 1860

A popular food and wine bar in Wexford known for serving small, large, and sharing plates. A favourite among locals due to its casual and warm atmosphere. The restaurant offers excellent service, food, and wine and is located just a short three-minute walk from the National Opera House.

T: +353 918 9109  
[www.franksplace1860.ie](http://www.franksplace1860.ie)



### THE SEA ROOMS AT KELLY'S HOTEL

The Sea Rooms at Kelly's Resort Hotel now offers an elevated smokehouse dining experience led by Head Chef David Harte. The menu features high quality meats, seasonal vegetables from Kelly's Kitchen Garden, and generous sharing plates cooked on our signature Smoke Soul barbecue and grill. Each dish is designed to highlight natural flavours, wholesome ingredients, and satisfying, flavour-driven combinations. The restaurant provides a relaxed yet polished atmosphere, where friendly staff create a welcoming and engaging dining experience. The Sea Rooms celebrates contemporary Irish cuisine with bold smokehouse flavours in every plate.

T: +353 9173553  
E: [thesearooms@kellys.ie](mailto:thesearooms@kellys.ie)  
[www.kellys.ie](http://www.kellys.ie)

### THE DUCK RESTAURANT AT MARLFIELD HOUSE

The Duck Terrace Restaurant, bar and café is in restored courtyard buildings including a coach house, potting shed and gardener's tool shed, on the grounds of Marlfield House. Situated in a long stone building with French doors opening onto a sandstone terrace overlooking the kitchen garden filled with vegetables, soft fruits, a plethora of herbs and beds of blooming roses!

T: +353 53 942 1124  
[www.marlfieldhouse.com](http://www.marlfieldhouse.com)



### THE LOBSTER POT

Traditional Irish Pub Setting, serving the finest Seafood and Irish Cuisine in Wexford. Newly reopened under new ownership: Paul & Sean, The Crazy Lobsters. Priding themselves on exceptional hospitality, great food and a fun atmosphere. Open Wednesday-Sunday from 1pm. Individual & Group bookings welcome.

T: +353 87 623 5142  
[www.lobsterpotwexford.com](http://www.lobsterpotwexford.com)

### WESTGATE DESIGN

Offering delicious, fresh wholesome dishes, freshly made salads, juices, sandwiches, soups, main dishes and desserts, all fresh and at affordable prices. Westgate Design offers a wide variety of dishes with the casual approach of counter order service, take out, or grab and go from their deli.

T: +353 53 912 3787  
[www.westgatedesign.ie](http://www.westgatedesign.ie)

## 2026 FESTIVAL CALENDAR

### THURSDAY 15 OCTOBER

- 5pm Still, life ...
- 8pm Iris

### FRIDAY 16 OCTOBER

- 12pm Pop-up Event
- 12pm Friends Reception\*
- 1pm Lunchtime Recital (St Iberius)
- 3pm The Rose of Castile
- 7:30pm L'equivoco stravagante  
Post Opera Friends Party\*

### SATURDAY 17 OCTOBER

- 12pm Pop-up event
- 1pm Lunchtime Recital (St Iberius)
- 2:30pm Bravura Lunch\*
- 3pm Much Ado About Nothing
- 7:30pm 75th Anniversary  
Fundraising Gala

### SUNDAY 18 OCTOBER

- 11am Dr Tom Walsh Lecture
- 12pm Pop-up Event
- 5pm The Gambler

### MONDAY 19 OCTOBER

- 12pm Pop-up Event
- 1pm Lunchtime Recital (St Iberius)
- 3pm 'Whisky Galore' Tasting
- 7:30pm The First Festival (1950s night)

### TUESDAY 20 OCTOBER

- 11am The Rose of Castile
- 12pm Pop-up Event
- 12pm Friends Reception\*
- 1pm Lunchtime Recital  
(O'Reilly Theatre)
- 4:30pm Still, Life...
- 7:30pm Iris
- 11pm The Next 75

### WEDNESDAY 21 OCTOBER

- 11am Impossible Interview
- 12pm Pop-up Event
- 1pm Lunchtime Recital (St Iberius)
- 2:30pm Bravura Lunch\*
- 3pm Much Ado About Nothing
- 7:30pm L'equivoco stravagante  
Post Opera Friends Party\*
- 11pm The Next 75

### THURSDAY 22 OCTOBER

- 9am Backstage & Breakfast Tour
- 11am The Rose of Castile
- 12pm Pop-up Event
- 1pm Lunchtime Recital (St Iberius)
- 2:30pm Bravura Lunch\*
- 7:30pm The Gambler
- 11pm The Next 75

### FRIDAY 23 OCTOBER

- 12pm Pop-up Event
- 12pm Friends Reception\*
- 1pm Lunchtime Recital  
(O'Reilly Theatre)
- 3pm Much Ado About Nothing
- 4:30pm Still, Life...
- 7:30pm Iris

### SATURDAY 24 OCTOBER

- 11am The First Festival
- 12pm Pop-up Event
- 1pm Lunchtime Recital (St Iberius)
- 2:30pm Bravura Lunch
- 3pm The Rose of Castile
- 7:30pm The Gambler  
Post Opera Friends Party\*

### SUNDAY 25 OCTOBER

- 11am Much Ado About Nothing
- 12pm Pop-up Event
- 2pm Still, Life...
- 5pm L'equivoco stravagante
- 9:30pm Gala Concert

### MONDAY 26 OCTOBER

- 11am The Rose of Castile
- 12pm Pop-up Event
- 2pm Choral Concert
- 5pm The First Festival

### TUESDAY 27 OCTOBER

- 12pm Pop-up Event
- 1pm Lunchtime Recital (St Iberius)

### WEDNESDAY 28 OCTOBER

- 11am Much Ado About Nothing
- 12pm Pop-up Event
- 1pm Lunchtime Recital  
(O'Reilly Theatre)
- 4:30pm Still, Life...
- 7:30pm Iris
- 11pm The Next 75

### THURSDAY 29 OCTOBER

- 9am Backstage & Breakfast Tour
- 11am The First Festival
- 12pm Pop-up Event
- 12pm Friends Reception\*
- 1pm Lunchtime Recital (St Iberius)
- 3pm The Rose of Castile
- 7:30pm L'equivoco stravagante
- 11pm The Next 75

### FRIDAY 30 OCTOBER

- 11am Much Ado About Nothing
- 12pm Pop-up Event
- 1pm Lunchtime Recital  
(O'Reilly Theatre)
- 2:30pm Bravura Lunch\*
- 4:30pm Still, Life...
- 7:30pm The Gambler  
Post Opera Friends Party\*
- 11pm The Next 75

### SATURDAY 31 OCTOBER

- 11am The Rose of Castile
- 12pm Pop-up Event
- 1pm Lunchtime Recital  
(O'Reilly Theatre)
- 5pm Iris

## FESTIVAL VENUES

- O'REILLY THEATRE / NATIONAL OPERA HOUSE
- JEROME HYNES THEATRE
- GRAIN STORE
- ST IBERIUS
- ROWE STREET CHURCH
- GREEN ACRES
- WHITES OF WEXFORD
- POP-UP EVENT VARIOUS LOCATIONS

\*Exclusive Friends Event

# WEXFORD

IRELAND

COME FOR THE    
 **CULTURE,**  
**STAY FOR THE**  
**EXPERIENCE**



[VisitWexford.ie](https://www.visitwexford.ie)



*Deidamia. Photo: Pádraig Grant*



Wexford Festival Opera  
The National Opera House  
High Street, Wexford  
Y35 FEP3  
Ireland

---

President	<b>Dr Terry Neill</b>
President Emeritus	<b>Sir David Davies</b>
Chairman	<b>Paul Cleary</b>
Artistic Director	<b>Rosetta Cucchi</b>
Executive Director	<b>Suzanne Nance</b>

---

**Friends Team**

T: +353 53 916 3525

[friends@wexfordopera.com](mailto:friends@wexfordopera.com)

---

**Box Office**

T: +353 53 912 2144

[boxoffice@wexfordopera.com](mailto:boxoffice@wexfordopera.com)

---

[wexfordopera.com](http://wexfordopera.com)

[@wexfordfestivalopera](https://www.instagram.com/wexfordfestivalopera)

---

Wexford Festival Trust is a registered charity in Ireland CHY 6132

Wexford Festival Opera UK Foundation is a charitable trust, registered with the UK Charity Commission: Number 1189184, and is also registered with the Inland Revenue for the purposes of claiming refunds on gifts and donations.



## FRIENDS PRIORITY BOOKING

---

Wed 22 April 2026 | Bravura, Cabaletta, Aria and Ensemble+

Wed 29 April 2026 | Ensemble and Prelude

Wed 6 May 2026 | General booking opens

---

[WEXFORDOPERA.COM](http://WEXFORDOPERA.COM) | +353 53 912 2144

---

